

NAAMANAN PATHIAN RAWNG A BÂWL

RAWNGBÂWLNA: Pathianin rawngbâwl dân min zirtîr thîn.

CHÂNGVAWN: “Israel ramah chauh lo chuan, khawvêl zawng zawngah Pathian a awm lo tih tûnah ka hre ta,” (2 Lalte 5:15, NIV).

Chhiâr Tûr: 2 Lalte 5:15-17; Zâwlneite leh Lalte, (2<sup>nd</sup> Edition, 2014), pp. 215-217..

Thuchah: Pathian dah lal berin, mi dangte rawng kan bâwlsak.

Zirlai Tum: Naupangte Chuan:

- Chibaibûk leh rawngbâwlsak tûr Pathian pakhat chiaah a awm tih hria a,
- Mi dangte entawn tlâka nun zêl duhna rilrû pûin,
- An nunah Pathian dah hmasak zêl duhna an nei ang.

*Nangni in tân eng thilte nge pawimawh ber le? In chhûngte leh in thiante em ni? Engtin nge Pathian in ngaih vê? Engati nge Naamanan Pathian chu Pathian tak awm chhun a ni tih a sawi? A chhâna chu Bible thawnthû aţanga hriat i'n tum dâwn teh ang u le.*

**N**AAMANA khân a sakawr-tawlailîr chu theih tâwpa chakin a khalh par par a ni mai thei e. Israelte Pathian leh Sal Hmeichhe Naupang zârah tihdamna a chang a. Tûnah chuan Elisha a hmuh leh vat a ngai a ni.

Elishâ chênna in kawta Naamana leh a chhiahhlawhte sakawr chungchuânga an lo thlen chuan a vaivut a khu luih mai a. Naamana chuan kawngkâ chu a'n kik dat dat a. Hlim takin a nui var var reng tawh mai a ni.

Hemi tum hi chuan Elisha pawh kawngkâah a lo lang vê a ni mai thei e. Naamana pawh kha a hlim êm avângin a beng thleng thlengin a nui pawh a ni mahnâ. Elisha pawh hlim takin a nui vê var var bawk a. Naamana chuan a vun chu Elisha a entîr vêl a. A mâmin, a hrisêl hmêl hlê a. Elishâ hnênah chuan a lâwmthû a hrilh mawlh mawlh mai a. Elisha pawh chuan



pawmpui taka nui chungin a lo bu vê nghat nghat ngêiin a rinawm.

Phûr zetin Naamana chuan, “Tûnah chuan Israelte Pathian ang hi khawvêl khawi dangah mah a awm vê lo tih ka hre ta! Khawngaih takin hêng thilpêkte hi la teh,” a ti a. Naamana chhiahhlawh chuan phûr zet hian rangkachak leh tangkaruâ an rawn kente chu a hlâng thla ta thuai thuai a.

Elisha chuan a bân a phar chhuak a. “Ni lo ve! In thilpêk rawn ken eng mah ka la lo vang,” a ti a. Elisha khân Naamana thilpêk eng mah a la duh lo, a chhan chu Pathian tihdamna a chan kha thilpêk hmanga lei theih angin a ngai mai palh ang tih a hlâu va. Elisha khân Naamana tihdam a nihnaah tû dang ni lovin, Pathian chauh chu châwimâwi zâwk sê a duh a. Naamanan Pathian dik awm chhun a lo hriat vê tâk avâng chuan Elisha chu a lâwm êm êm a ni.

Naamana chuan a thil pêk chu pawmsak tûrin Elisha chu a ngên chiam a. “Khawngaih takin hêng thilpêkte hi la hrâm teh. Ka lâwmzia i hnêna lantîr ka duh a ni,” a ti a. Chutichung pawhin zâwlnei Elisha chuan a lû a thing mai a ni.

Naamana chuan Elisha leh Elishâ Pathian chu chibai bûkin a lû a kûn a. A chhiahhlawhte chuan thilpêk an hlân thlâkte chu an hlâng leh vek a. Naamana chu a sakawr-tawlailîrah chuângin, a kaihherna hruî chelh chung chuan, “Hawh u, i hâwng tawh ang u le!” a ti a.

Pi Naamani pawhin an lo hâwn hlân nghâkhlel takin, tukverhah a lo thlîr deuh chhên tawh pawh a ni mai thei e. Kawngpui lama vaivut khu laih laih chu a hmû a. A pasal a lo ni reng mai! Lo hmuak tûrin a tlân chhuak nghâl pawh a ni mahnâ. A mita a thil hmuh chu a âwih lo deuh hial zâwk a! A pasal vuna phâr hri veina vâi iâr-uârte kha a awm tawh lo. Hlim leh phûr takin, “I dam tâ!” tiin a âu chêlchûl ngêiin a rinawm e.

Tûnah chuan a hlim êm avângin a hmûi a chîp hlei thei lo a ni ta ber mai! Naamana pawhin thil chingchâng a nupui hnêna a hrilh lai chuan hlim takin a nui deuh hawk hawk reng mai bawk a. A pasal hnênah chuan, “Kan hmeichhe naupang awmpui-te zâwlneiin a’n tidam che chu ka lâwm êm!” te pawh a tiin a rinawm.

Naamana pawh chuan, “Ni chiah mai, mahse min tidamtu tak chu zâwlnei pawh a ni lo. Pathian a ni zâwk. Amah ang Pathian dang rêng rêng an awm lo. Israelte Pathian hi Pathian dik tak chu a ni. Tûn aţang chuan Amah chauh chu chibai bûk tawh tûrin thutlûkna ka siam ta a ni,” tiin hlim takin a hrilh a.

An rama mî zawng zawngin Naamna phâr natna chu a dam ta tih an hria a. Anni milem pathianten an tih vê theih loh, thil mak ropui tak titheitu Pathian chu Israel ramah a awm tih pawh an lo hriat phah ta a ni.

## TÌH TÛR LEH SAWI TÛR

**Sabbath Chàwnhû:** Tûn kâr nî tinin, zirlai hi chhiar ho vin, chângvawn ennawn nân heta zaizir hi in ti tîh nîn dâwn nia:

**Israel ramah chauh lo chuan.** . . . Âwmah kut pahnih chherchhuân la



**khawvêl zawng zawngah.** . . . .Bân pahnih hmalam zâwngin phar chhuak la.



**Pathian a awm lo tih.** . . . . .Chunglam kâwkin, lû thing nar nar la



**tûnah ka hre ta.** . . . . .Chal dek la.



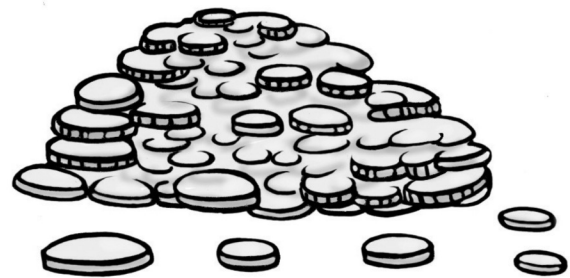
**2 Lalte 5:15.** . . . . . Kut phah pahnih thlawp a, kâu leh.

**Sunday:** Chhiar ho tûr: *2 Lalte 5:15-17.* **Inzawh tûr:** Engati nge Naamanan zâwnei Elishâ hnêna thilpêk lâwmman pêk a duh? Engati nge Elisha khân a lo lâk duh loh tlat? Naamana khân milem chibai a bûk zui zêl em? Tu nge chibai a bûk tâk? In fâte nên zîng tin ÷awngtai ho ÷hîn ula. In fâten nilênga Pathian rawng an bâwl theih nân dîlsak ang che u.



**Thàwhṭannî:** Sabbath sikul lama in fâten “First-Place Ribbon” an siam kha mi dang hnêna pe tûrin fuih ula, chutah Naamanan a nuna Pathian a dah lal tâk dân chanchin kha in hrilh zui dâwn nia.

**Thàwhlehnî:** In fâte chu hlum leh saidâwiûm chhîn hmanga pawisa nâwi lem siam tûrin ÷anpui ula. Naamanan Elishâ hnêna rangkachak leh tangkaraw thilpêk hlan a tum chungchâng kha hrilh la. **Inzawh tûr:** Engati nge Elishan Naamana thilpêk a dawn sak duh loh? Thilpêk dawn beiseiin mîte kan ÷anpui tûr a ni em? Eng nge a chhan?



**Nilâinî:** Kan nuna Pathian chu dah-lal ber tûr kan nih chhan sawi la. Kan nuna Pathian chu dah-lal ber tûrin vawin hian eng nge kan tih theih ang? In fâte rawtna chu atakin hlen teh u.

**Níngānî:** In fâte chuan Lâwmthu sawina note siamin chei mâwi teh se. In fâten Isua chanchin an hriat chian theihna tûra lo ÷anpui ÷hîntûte hnênah in thawn dâwn nia. Pawisa nâwi hlut dân indawtin remtûr teh u. **Inzawh tûr:** A khawî chu nge hlu ber a, a dawttu chu khawî nge ni? Mî ÷henkhat hian Pathian âiin sum an dah-lal zâwk ÷hîn em? Pathian chu kan tân hmasa ber a nih reng theih nâna A ÷anpuina dîlin ÷awngtai ang che u.

**Zirtâwpnî:** In chhûngkaw worship-naah Bible thawnthû hi lemchanah hmang ho ang che u. **Inzawh tûr:** Engtin nge Isua chu kan nunah hmasa berah kan neih zêl theih ang? Hla sak tûr: “**Into My Heart**” (No. 17), chutah in chhûngkua khân Pathian chu in dah-lal ber theih nân A ÷anpuina dîlin ÷awngtai ang che u.